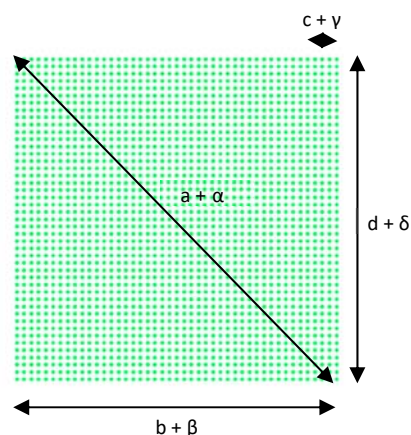


# DE-R 388 Diffractive Optical Element



- **Element Number: DE-R 388**
- **Current Product Revision: A**
- Description: Matrix 51 x 51 Dots
- Number of Dots: 2601 Dots
- Substrate Material: Polycarbonate (PC)
- Size (Ø x Thickness): 8 x 0.63 mm
- Design Wavelengths: 532 nm
- Recommended Wavelength Range: 500-560 nm
- Minimum Recommended Beam Diameter: 2-3 mm

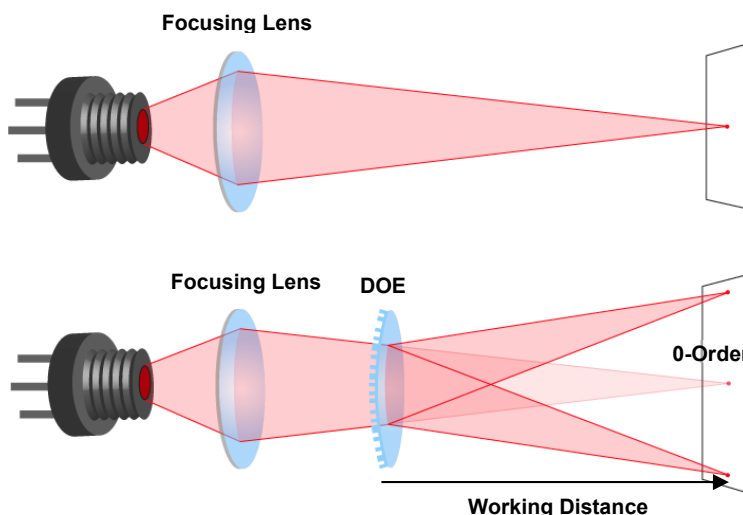
Pattern size and pattern angles and the intensity in the undiffracted central spot ('zero order intensity', see reverse page) will vary most with the wavelength. Within the recommended wavelength range, the zeroth order has a similar power than the off-axis beams of the dot matrix.

Diffraction efficiencies given on this datasheet have been measured using elements of product revision A.

## Geometry and Diffraction Angles

Wavelength	Pattern Size @ 100 mm Distance				Pattern Angles			
	a	b	c	d	α	β	γ	δ
405 nm	35.2 mm	24.9 mm	0.5 mm	24.9 mm	20.0°	14.2°	0.3°	14.2°
450 nm	39.3 mm	27.8 mm	0.6 mm	27.8 mm	22.2°	15.8°	0.3°	15.8°
515 nm	45.3 mm	32.0 mm	0.6 mm	32.0 mm	25.5°	18.2°	0.4°	18.2°
532 nm	46.8 mm	33.1 mm	0.7 mm	33.1 mm	26.4°	18.8°	0.4°	18.8°
594 nm	52.6 mm	37.2 mm	0.7 mm	37.2 mm	29.5°	21.1°	0.4°	21.1°
640 nm	57.0 mm	40.3 mm	0.8 mm	40.3 mm	31.8°	22.8°	0.5°	22.8°
684 nm	61.3 mm	43.4 mm	0.9 mm	43.4 mm	34.1°	24.5°	0.5°	24.5°
750 nm	67.9 mm	48.0 mm	1.0 mm	48.0 mm	37.5°	27.0°	0.5°	27.0°

## Setup



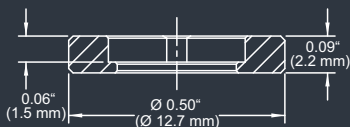
Laser diodes are the most common light source to be used with diffractive optical elements, but other laser light sources may also be used.

The DOEs are best used with collimated or convergent laser sources. The microstructure surface should be oriented towards the laser.

The 0-order spot is equivalent in size and shape to the original beam, but its power is attenuated.

### MOUNTED VERSION

For testing or setups under laboratory conditions we offer a version mounted in 12.7 mm stainless steel frame for use with standard laboratory holders.



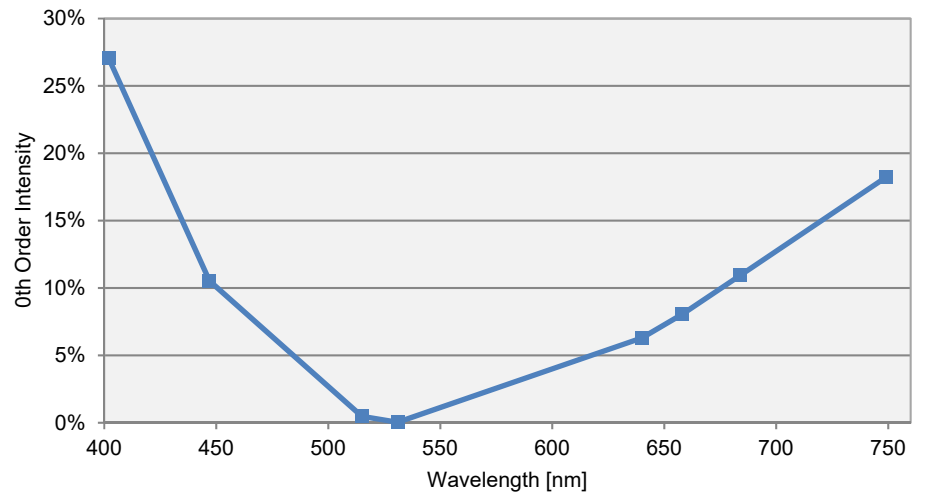
### COLLIMATED / CONVERGING LASER

The laser can be collimated for long range use or converging for a fixed working distance.

Please note that the size/thickness of each spot or line depends on the focusing of the laser.

## Diffraction Zero Order Intensity:

Wavelength	0-Order Intensity
402 nm	27.0%
447 nm	10.5%
515 nm	0.5%
531 nm	0.1%
640 nm	6.3%
658 nm	8.1%
684 nm	11.0%
749 nm	18.2%



HOLOEYE Photonics AG  
Volmerstr. 1  
12489 Berlin, Germany  
contact@holoeye.com  
www.holoeye.com



Pioneers in Photonic Technology