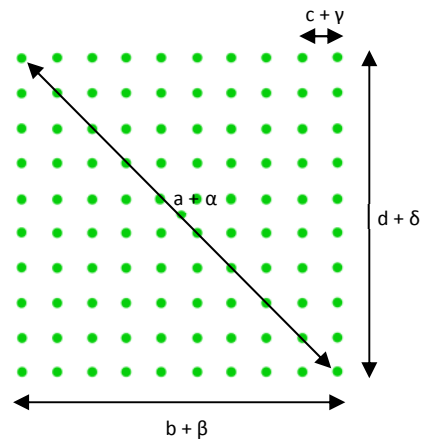


DE-R 351 Diffractive Optical Element



- **Element Number:** DE-R 351
- **Current Product Revision:** A
- **Description:** Matrix 10 x 10 Dots
- **Number of Dots:** 100 Dots
- **Substrate Material:** Polycarbonate (PC)
- **Size (Ø x Thickness):** 8 x 1.2 mm
- **Design Wavelengths:** 532 nm
- **Recommended Wavelength Range:** 510-600 nm
- **Minimum Recommended Beam Diameter:** 0.5-1 mm

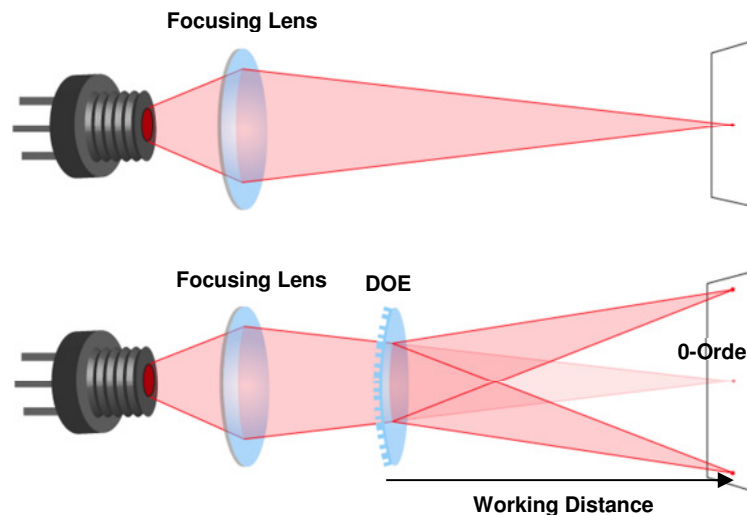
Pattern size and pattern angles and the intensity in the undiffracted central spot ('zero order intensity', see reverse page) will vary most with the wavelength. Within the recommended wavelength range, the zeroth order has a similar power than the off-axis beams of the dot matrix.

Diffraction efficiencies given on this datasheet have been measured using elements of product revision A.

Geometry and Diffraction Angles

Wavelength	Pattern Size @ 100 mm Distance				Pattern Angles			
	a	b	c	d	α	β	γ	δ
405	31.8 mm	22.5 mm	2.50 mm	22.5 mm	18.1°	12.8°	1.43°	12.8°
450	35.5 mm	25.1 mm	2.79 mm	25.1 mm	20.1°	14.3°	1.59°	14.3°
488	38.56 mm	27.3 mm	3.03 mm	27.3 mm	21.8°	15.5°	1.73°	15.5°
515	40.8 mm	28.8 mm	3.20 mm	28.8 mm	23.1°	16.4°	1.82°	16.4°
532	42.2 mm	29.8 mm	3.32 mm	29.8 mm	23.8°	14.0°	1.89°	14.0°
635	50.8 mm	36.0 mm	4.00 mm	36.0 mm	28.5°	20.4°	2.26°	20.4°
650	52.1 mm	36.9 mm	4.10 mm	36.9 mm	29.2°	20.9°	2.32°	20.9°
730	59.1 mm	41.8 mm	4.64 mm	41.8 mm	32.9°	23.6°	2.62°	23.6°
780	63.5 mm	44.9 mm	4.99 mm	44.9 mm	35.2°	25.3°	2.81°	25.3°
808	66.0 mm	46.7 mm	5.19 mm	46.7 mm	36.5°	26.3°	2.92°	26.3°

Setup



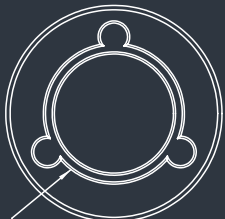
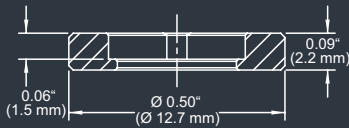
Laser diodes are the most common light source to be used with diffractive optical elements, but other laser light sources may also be used.

The DOEs are best used with collimated or convergent laser sources. The microstructure surface should be oriented towards the laser.

The 0-order spot is equivalent in size and shape to the original beam, but its power is attenuated.

MOUNTED VERSION

For testing or setups under laboratory conditions we offer a version mounted in 12.7 mm stainless steel frame for use with standard laboratory holders.



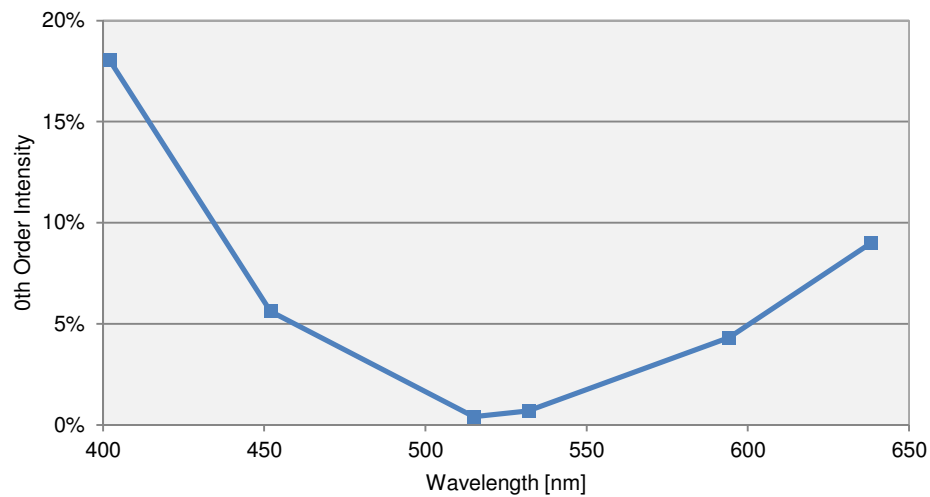
COLLIMATED / CONVERGING LASER

The laser can be collimated for long range use or converging for a fixed working distance.

Please note that the size/thickness of each spot or line depends on the focusing of the laser.

Diffraction Zero Order Intensity:

Wavelength	0-Order Intensity
402	18.0%
452	5.6%
515	0.4%
532	0.7%
594	4.3%
638	9.0%



HOLOEYE Photonics AG
Volmerstr. 1
12489 Berlin, Germany
contact@holoeye.com
www.holoeye.com



Pioneers in Photonic Technology