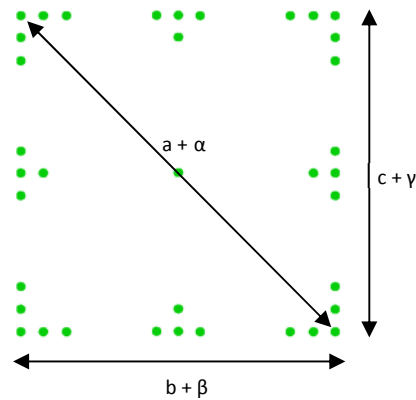


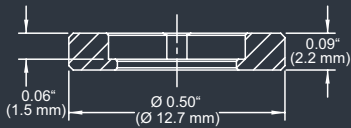
# DE-R 262 Diffractive Optical Element



- **Element Number:** DE-R 262
- **Current Product Revision:** A
- **Description:** Viewfinder (Dot Square)
- **Number of Dots:** 37 Dots
- **Substrate material:** Polycarbonate (PC)
- **Size (Ø x Thickness):** 8 x 1.2 mm
- **Design wavelengths:** 532 nm
- **Recommended wavelength range:** 480-670 nm
- **Minimum recommended beam diameter:** 0.5-1 mm

## MOUNTED VERSION

For testing or setups under laboratory conditions we offer a version mounted in 12.7 mm stainless steel frame for use with standard laboratory holders.



## COLLIMATED / CONVERGING LASER

The laser can be collimated for long range use or converging for a fixed working distance.

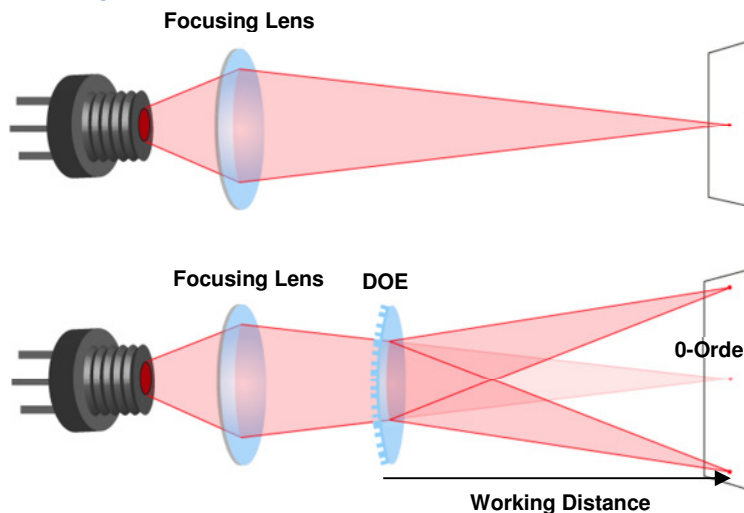
Please note that the size/thickness of each spot or line depends on the focusing of the laser.

Pattern size and pattern angles and the intensity in the undiffracted central spot ('zero order intensity', see reverse page) will vary most with the wavelength. Within the recommended wavelength range, the element shows the lowest intensity in the central spot. Outside the recommended wavelength range the pattern will be distorted. Diffraction efficiencies given on this datasheet have been measured using elements of product revision A.

## Geometry and Diffraction Angles

Wavelength	Pattern Size @ 100 mm Distance				Pattern Angles			
	a	b	c	d	$\alpha$	$\beta$	$\gamma$	$\delta$
450 nm	14.7 mm	10.4 mm	0.45 mm	10.4 mm	8.4°	6.0°	0.26°	6.0°
515 nm	16.9 mm	11.9 mm	0.51 mm	11.9 mm	9.6°	6.8°	0.29°	6.8°
532 nm	17.4 mm	12.3 mm	0.53 mm	12.3 mm	10.0°	7.0°	0.30°	7.0°
635 nm	21 mm	14.7 mm	0.63 mm	14.7 mm	11.9°	8.4°	0.36°	8.4°
650 nm	21 mm	15.1 mm	0.65 mm	15.1 mm	12.2°	8.6°	0.37°	8.6°
730 nm	24 mm	16.9 mm	0.72 mm	16.9 mm	13.7°	9.7°	0.41°	9.7°
780 nm	26 mm	18.1 mm	0.77 mm	18.1 mm	14.6°	10.3°	0.44°	10.3°
808 nm	27 mm	18.7 mm	0.80 mm	18.7 mm	15.2°	10.7°	0.46°	10.7°

## Setup



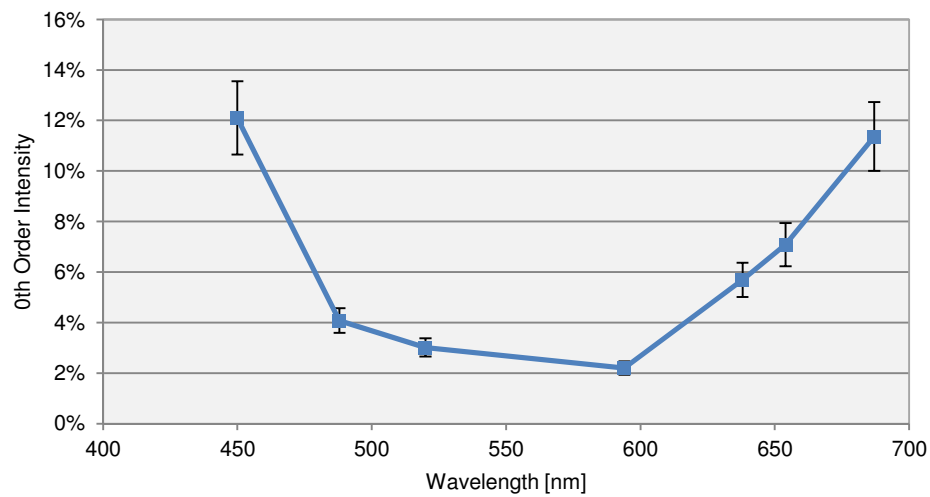
Laser diodes are the most common light source to be used with diffractive optical elements, but other laser light sources may also be used.

The DOEs are best used with collimated or convergent laser sources. The microstructure surface should be oriented towards the laser.

The 0-order spot is equivalent in size and shape to the original beam, but its power is attenuated.

## Diffraction Zero Order Intensity:

Wavelength	0-Order Intensity
450	12.1%
488	4.1%
520	3.0%
594	2.2%
638	5.7%
654	7.1%
669	6.8%
687	11.4%



HOLOEYE Photonics AG  
Volmerstr. 1  
12489 Berlin, Germany  
contact@holoeye.com  
www.holoeye.com



Pioneers in Photonic Technology