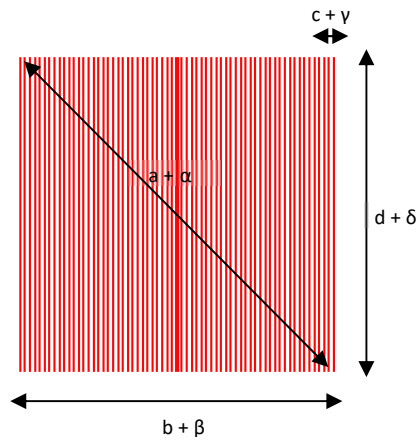


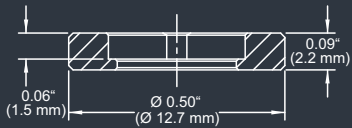
DE-R 255 Diffractive Optical Element



- **Element Number: DE-R 255**
- **Current Product Revision: B**
- Description: 65 Lines (Square – Central Line Thicker)
- Substrate material: Polycarbonate (PC)
- Size (Ø x Thickness): 8 x 0.63 mm
- Design wavelengths: 660 nm
- Recommended wavelength range: 610-750 nm
- Minimum recommended beam diameter: 3.5-4 mm

MOUNTED VERSION

For testing or setups under laboratory conditions we offer a version mounted in 12.7 mm stainless steel frame for use with standard laboratory holders.



COLLIMATED / CONVERGING LASER

The laser can be collimated for long range use or converging for a fixed working distance.

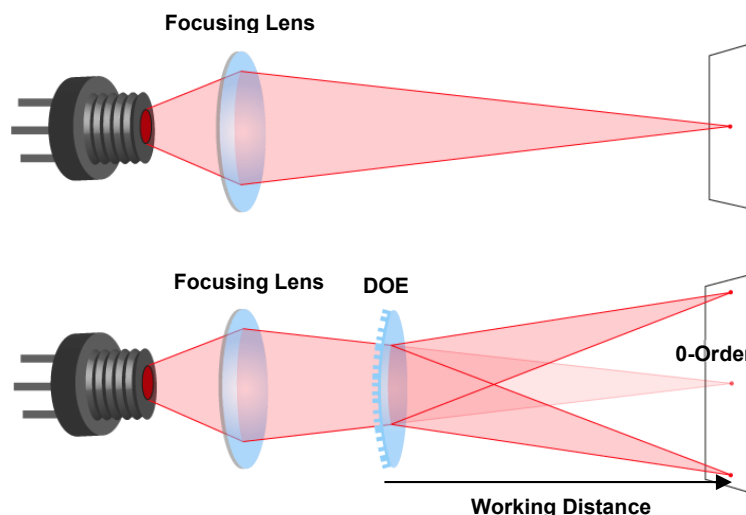
Please note that the size/thickness of each spot or line depends on the focusing of the laser.

This Large-angle pattern is subject to geometrical distortion due to its symmetry properties, if the DOE is used at laser wavelengths significantly different ($\Delta\lambda > 50\text{nm}$) from the design wavelength. Pattern size and pattern angles and the intensity in the undiffracted central spot ('zero order intensity', see reverse page) will vary most with the wavelength. Diffraction efficiencies given on this datasheet have been measured using elements of product revision B.

Geometry and Diffraction Angles

Wavelength	Pattern Size @ 100 mm Distance				Pattern Angles			
	a	b	c	d	α	β	γ	δ
450 nm	30.7 mm	21.6 mm	0.34 mm	21.7 mm	17.4°	12.4°	0.19°	12.4°
515 nm	35.2 mm	24.9 mm	0.39 mm	24.9 mm	19.9°	14.2°	0.22°	14.2°
532 nm	36.4 mm	25.7 mm	0.40 mm	25.7 mm	20.6°	14.6°	0.23°	14.7°
635 nm	43.8 mm	30.9 mm	0.48 mm	30.9 mm	24.7°	17.6°	0.27°	17.6°
650 nm	44.9 mm	31.7 mm	0.49 mm	31.7 mm	25.3°	18.0°	0.28°	18.0°
660 nm	45.6 mm	32.2 mm	0.50 mm	32.2 mm	25.7°	18.3°	0.29°	18.3°
750 nm	52.2 mm	36.8 mm	0.58 mm	36.9 mm	29.2°	20.9°	0.33°	20.9°
808 nm	56.5 mm	39.9 mm	0.62 mm	40.0 mm	31.5°	22.6°	0.35°	22.6°

Setup



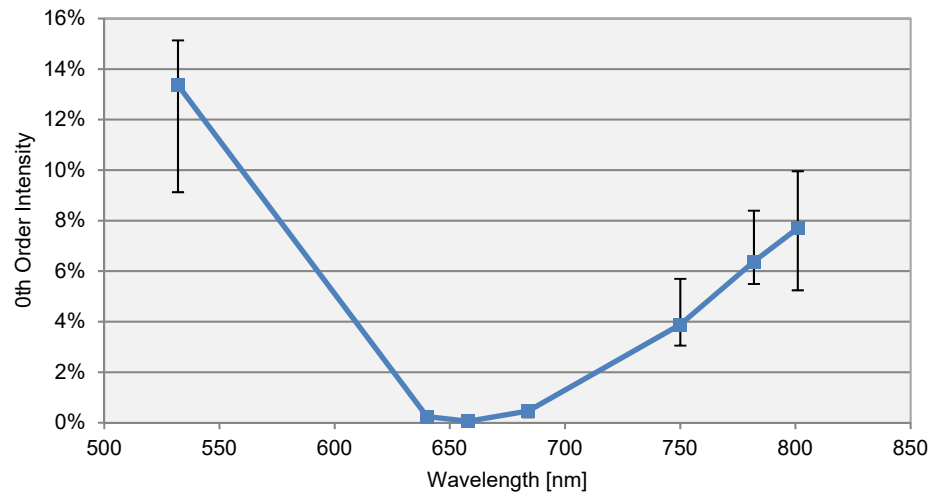
Laser diodes are the most common light source to be used with diffractive optical elements, but other laser light sources may also be used.

The DOEs are best used with collimated or convergent laser sources. The microstructure surface should be oriented towards the laser.

The 0-order spot is equivalent in size and shape to the original beam, but its power is attenuated.

Diffraction Zero Order Intensity:

Wavelength	0-Order Intensity
532 nm	13.4%
640 nm	0.2%
658 nm	0.1%
684 nm	0.5%
750 nm	3.9%
782 nm	6.4%
801 nm	7.7%



HOLOEYE Photonics AG
Volmerstr. 1
12489 Berlin, Germany
contact@holoeye.com
www.holoeye.com



Pioneers in Photonic Technology