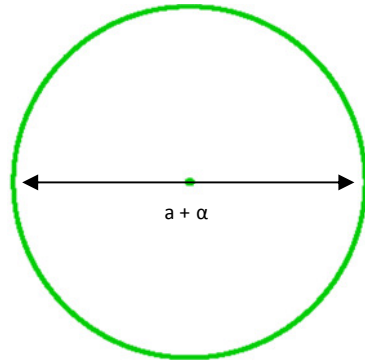


DE-R 238 Diffractive Optical Element



- **Element Number:** DE-R 238
- **Current Product Revision:** A
- Description: Solid Line Circle
- Substrate material: Polycarbonate (PC)
- Size (\varnothing x Thickness): 8 x 1.2 mm
- Design wavelengths: 520 nm
- Recommended wavelength range: 520-532 nm
- Minimum recommended beam diameter: 3-4 mm

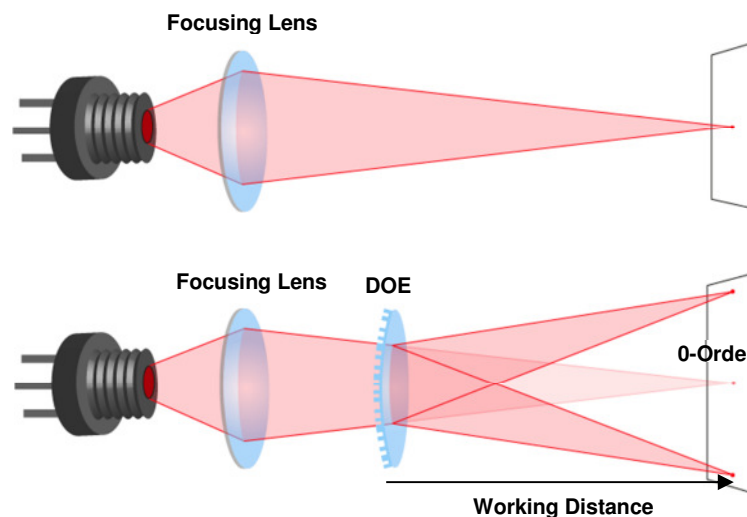
Pattern size and pattern angles and the intensity in the undiffracted central spot ('zero order intensity', see reverse page) will vary most with the wavelength. At the optimum wavelength given on this datasheet, the element shows the lowest intensity in the central spot.

Diffraction efficiencies given on this datasheet have been measured using elements of product revision A.

Geometry and Diffraction Angles

Wavelength	Pattern Size @ 100 mm Distance	Pattern Angles
	a	α
405 nm	4.7 mm	2.7°
450 nm	5.2 mm	3.0°
515 nm	5.9 mm	3.4°
532 nm	6.1 mm	3.5°
635 nm	7.3 mm	4.2°
650 nm	7.5 mm	4.3°
730 nm	8.4 mm	4.8°

Setup



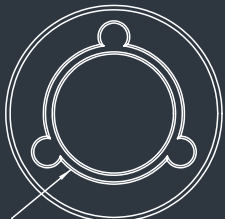
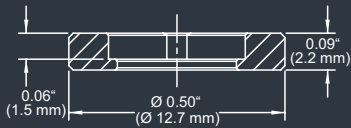
Laser diodes are the most common light source to be used with diffractive optical elements, but other laser light sources may also be used.

The DOEs are best used with collimated or convergent laser sources. The microstructure surface should be oriented towards the laser.

The 0-order spot is equivalent in size and shape to the original beam, but its power is attenuated.

MOUNTED VERSION

For testing or setups under laboratory conditions we offer a version mounted in 12.7 mm stainless steel frame for use with standard laboratory holders.



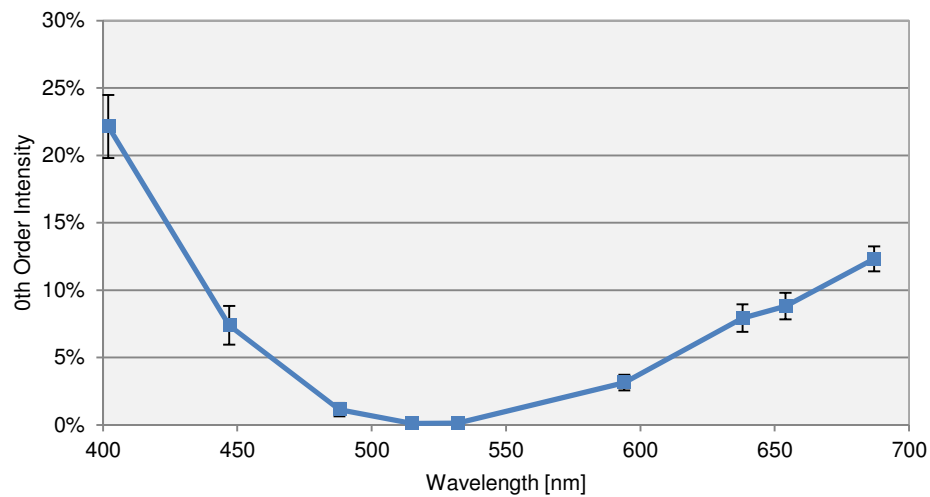
COLLIMATED / CONVERGING LASER

The laser can be collimated for long range use or converging for a fixed working distance.

Please note that the size/thickness of each spot or line depends on the focusing of the laser.

Diffraction Zero Order Intensity:

Wavelength	0-Order Intensity
402	22 %
447	7.4 %
488	1.1 %
515	0.1 %
532	0.1 %
594	3.1 %
638	7.9 %
654	8.8 %
687	12 %



HOLOEYE Photonics AG
Volmerstr. 1
12489 Berlin, Germany
contact@holoeye.com
www.holoeye.com