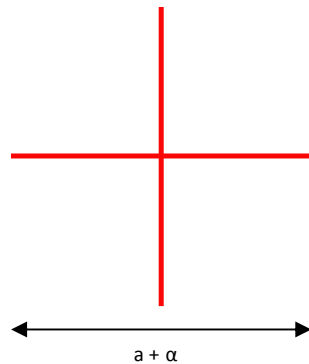


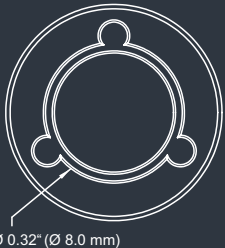
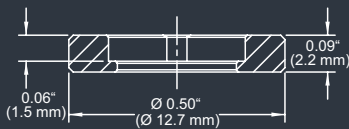
DE-R 249 Diffractive Optical Element



- **Element Number:** DE-R 249
- **Current Product Revision:** D
- **Description:** Cross – 45 @ 633
- **Number of Spots on Line:** 1051
- **Substrate Material:** Polycarbonate (PC)
- **Size (Ø x Thickness):** 8 x 1.2 mm
- **Design Wavelengths:** 633 nm
- **Recommended Wavelength Range:** 620-700 nm
- **Minimum Recommended Beam Diameter:** 1.5-2 mm

MOUNTED VERSION

For testing or setups under laboratory conditions we offer a version mounted in 12.7 mm stainless steel frame for use with standard laboratory holders.



Thorlabs 8 mm steel lens adapter

COLLIMATED / CONVERGING LASER

The laser can be collimated for long range use or converging for a fixed working distance.

Please note that the size/thickness of each spot or line depends on the focusing of the laser.

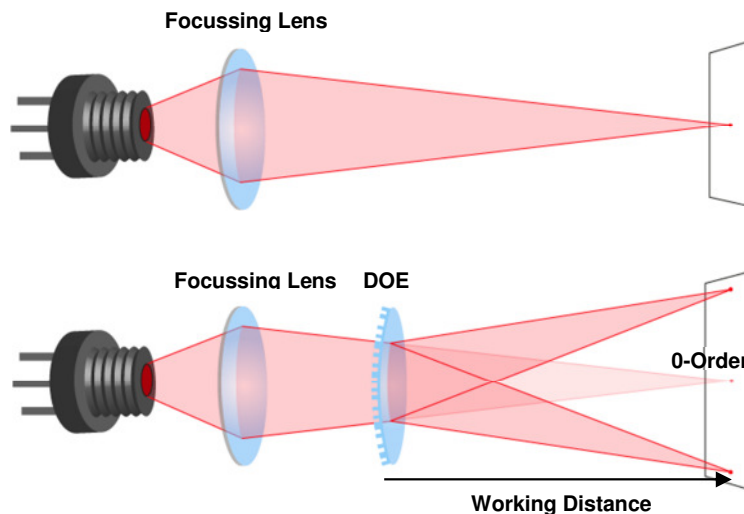
Within the recommended wavelength range, the zeroth order is not brighter than the rest of the cross. Pattern size and pattern angles and the intensity in the undiffracted central spot ('zero order intensity', see reverse page) will vary most with the wavelength.

Diffraction efficiencies given on this datasheet have been measured using elements of product revision D.

Pattern Geometry and Diffraction Angles

Wavelength	Pattern Size @ 100 mm Distance	Pattern Angle
	a	α
450 nm	57 mm	32°
515 nm	66 mm	36°
532 nm	68 mm	38°
635 nm	83 mm	45°
650 nm	86 mm	46°
730 nm	99 mm	53°
780 nm	107 mm	56°
808 nm	112 mm	59°

Setup



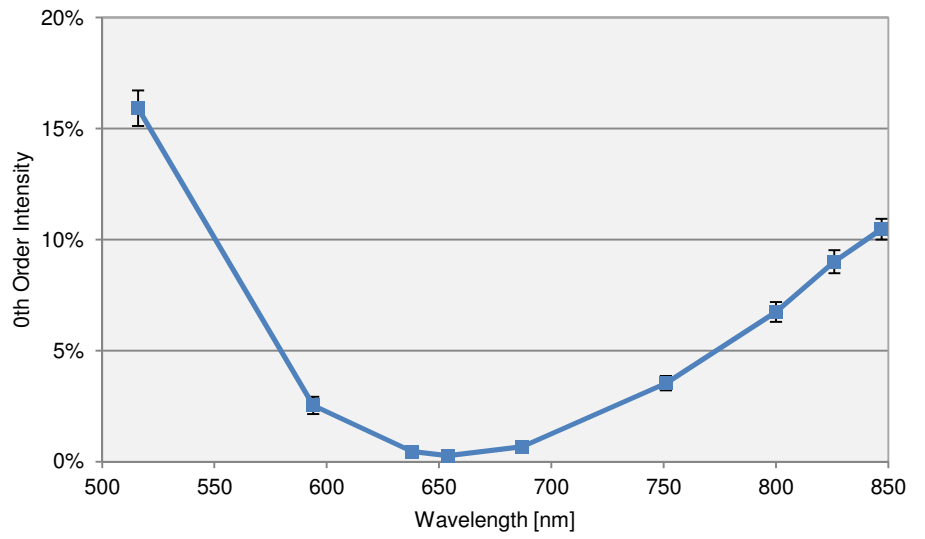
Laser diodes are the most common light source to be used with diffractive optical elements, but other laser light sources may also be used.

The DOEs are best with collimated or convergent laser sources. The microstructure surface should be oriented towards the laser.

The 0-order spot is equivalent in size and shape to the original beam, but its power is attenuated.

Diffraction Zero Order Intensity:

Wavelength	0-Order Intensity
516	15.9%
594	2.5%
638	0.5%
654	0.3%
687	0.7%
751	3.5%
800	6.7%
826	9.0%
847	10.5%



HOLOEYE Photonics AG
Albert-Einstein-Str. 14
12489 Berlin, Germany
contact@holoeye.com
www.holoeye.com



Pioneers in Photonic Technology